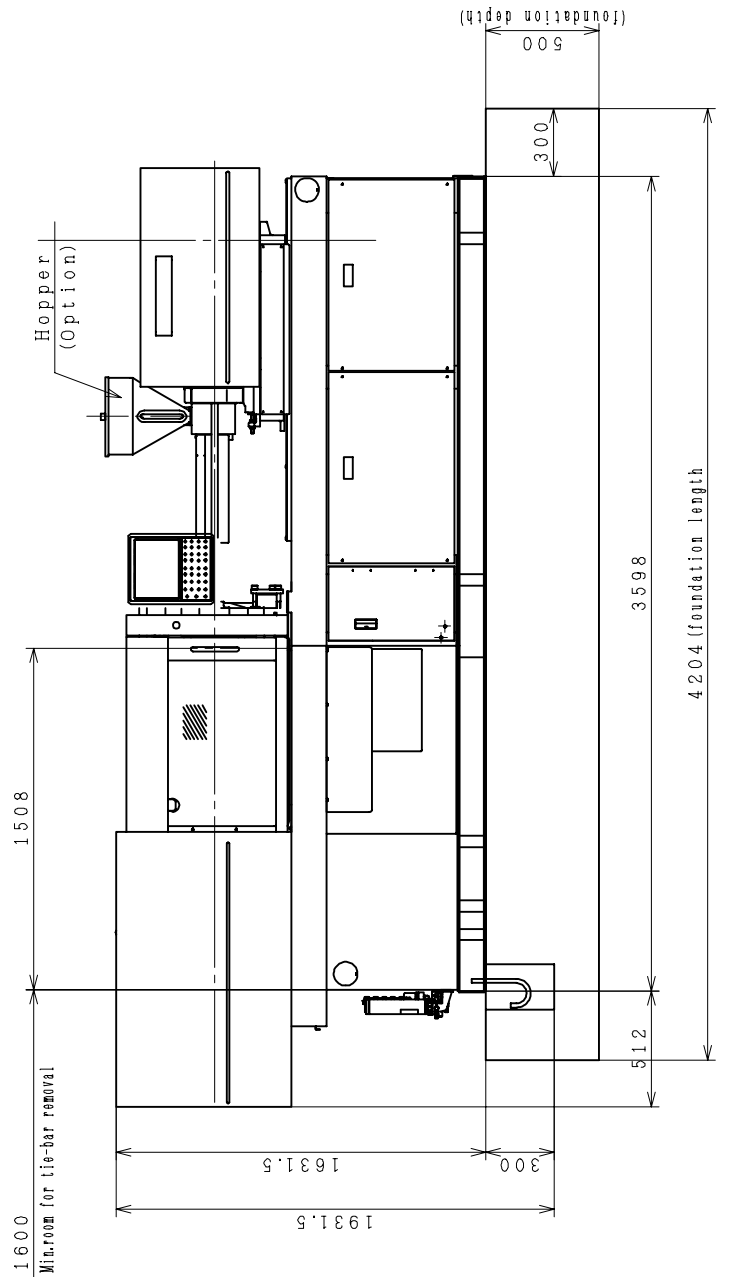
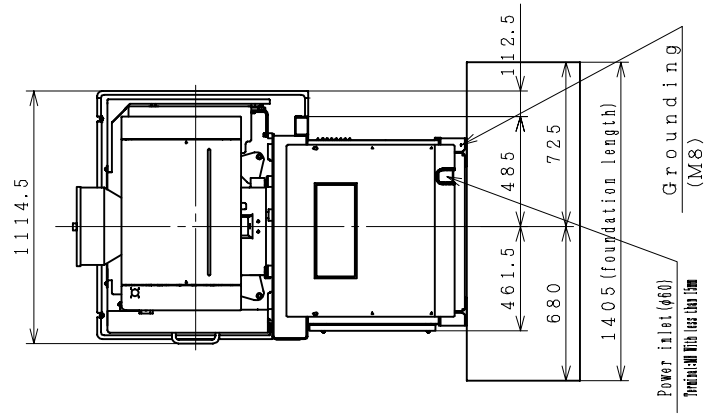
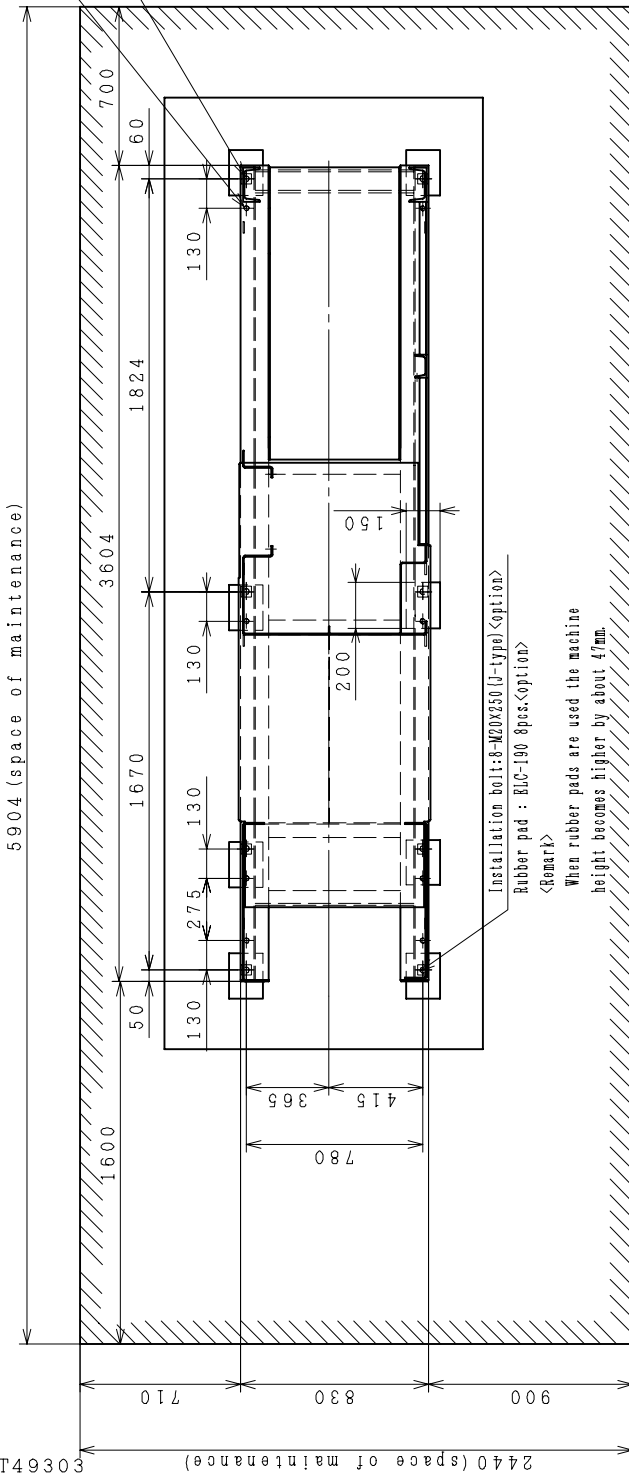


<Note>

- 1) Detail information about foundation is available upon request, if any.
- 2) The primary piping of cooling water should be made using flexible piping such as a rubber hose. And also, the inlet wiring of power source should be made using flexible cable such as a rubber sheath cord.

Jack bolt  
(8-M24X80 All screw) option  
Hole for installation  
(8-φ26)



100MEt III (CE)  
FOUNDATION DRAWING