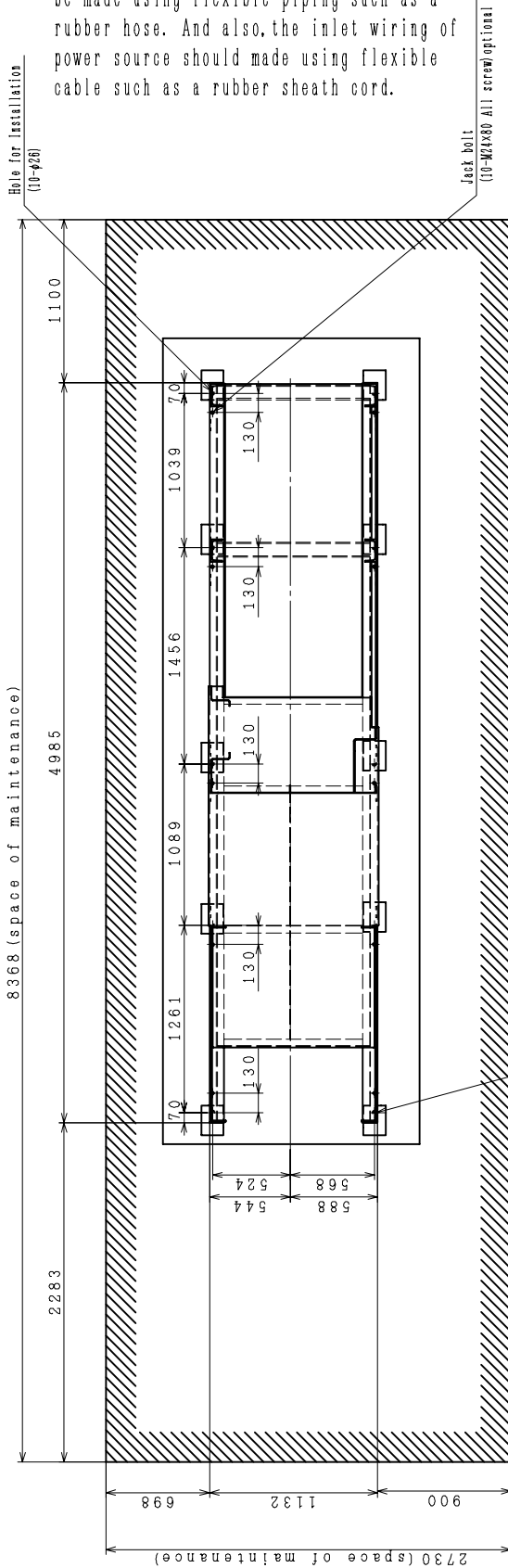
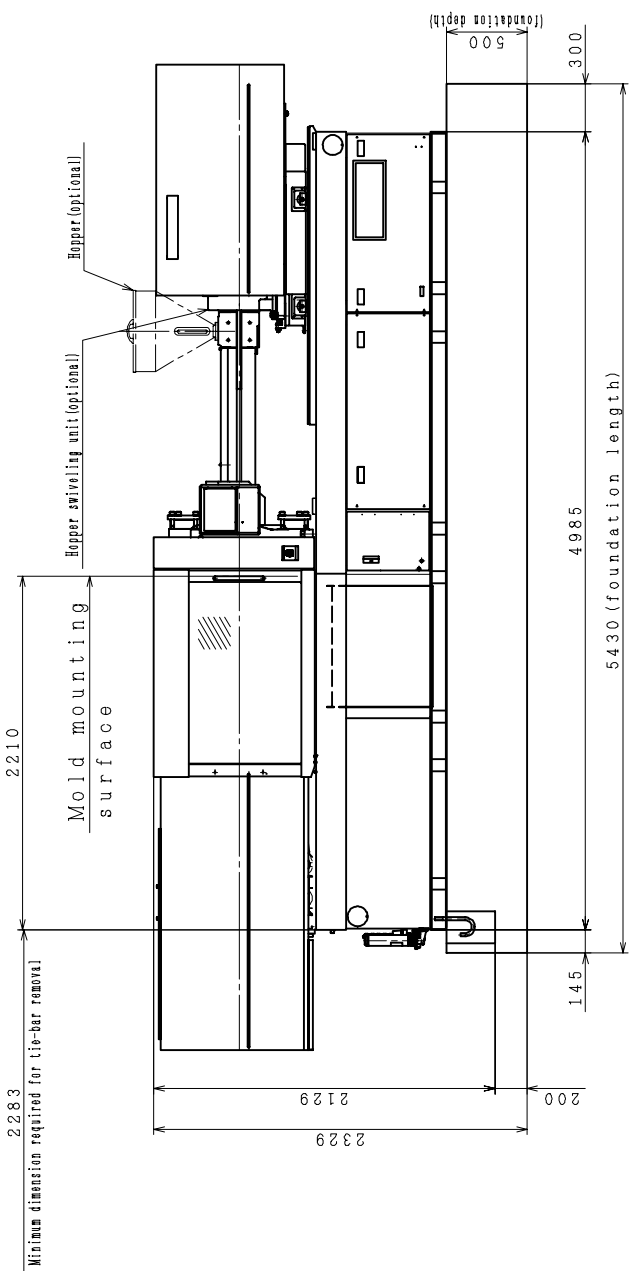


<Note>

- 1) Detail information about foundation is available upon request, if any.
- 2) The primary piping of cooling water should be made using flexible piping such as a rubber hose. And also, the inlet wiring of power source should be made using flexible cable such as a rubber sheath cord.



Installation bolt: 10-M20X250 (I-type) <optional>
 Rubber pad: ELC-190 10pcs. <optional>
 <Remark>
 When rubber pads (ELC-190) are used the machine height becomes higher by about 47MM.



T49306

10-900

230MEt III (CE)
 FOUNDATION DRAWING