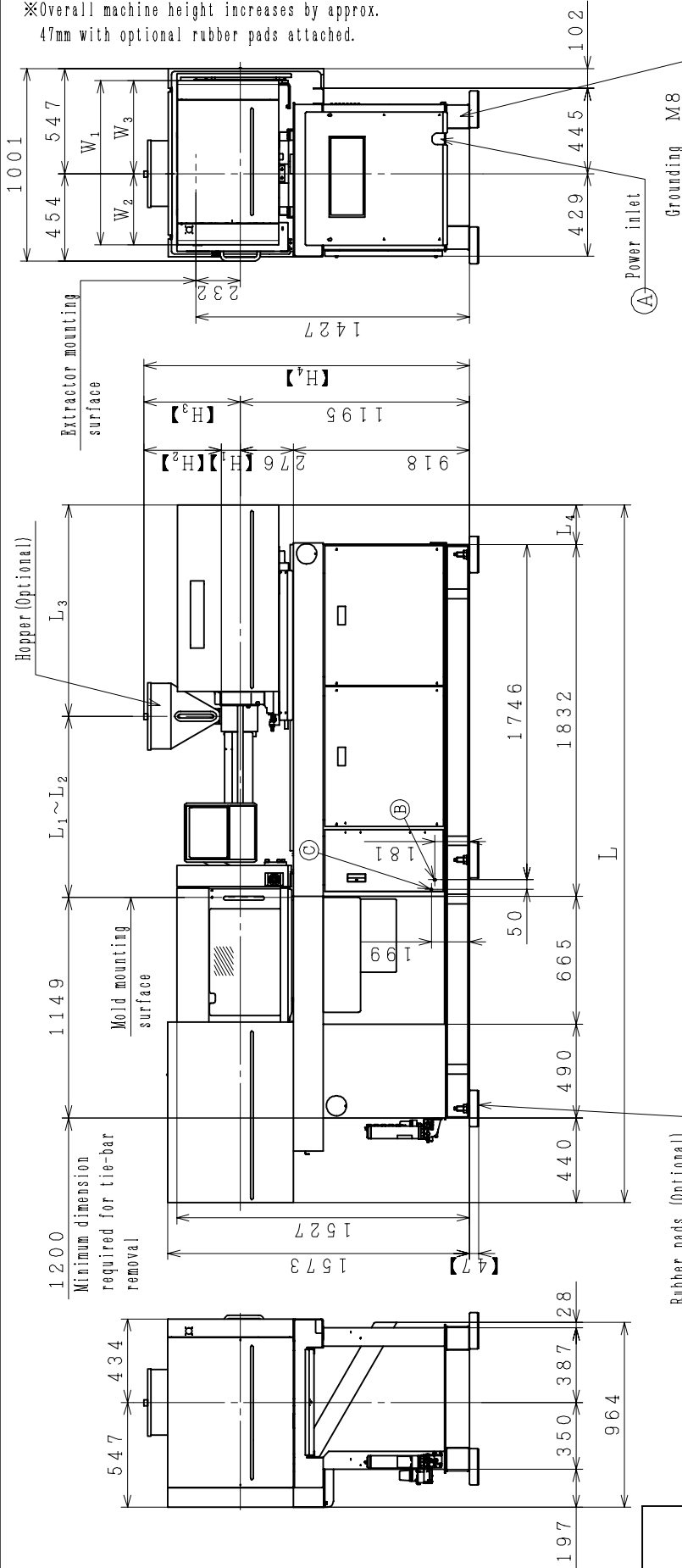


- Ⓐ Power inlet (φ60). Breaker capacity (factory) 75A (D300B:150A)
- Ⓑ Water for hopper throat IN:PT3/8 with Y-type strainer  
(Nomal water volume:5 to 10 l/min.)
- Ⓒ Water for hopper throat OUT:PT3/8
- ※ Overall machine height increases by approx.  
47mm with optional rubber pads attached.



Injection Unit (Screw diameter)	L	L <sub>1</sub>	L <sub>2</sub>	L <sub>3</sub>	L <sub>4</sub>	W <sub>1</sub>	W <sub>2</sub>	W <sub>3</sub>	【H <sub>1</sub> 】	【H <sub>2</sub> 】	【H <sub>3</sub> 】	【H <sub>4</sub> 】
φ16	3427	635	390	887	-315	855	370	485	80	401	481	1676
0.7H·0.7U	φ18	3427	675	430	887	855	370	485	80	401	481	1676
	φ20	3427	716	471	887	855	370	485	80	401	481	1676
1.5H	φ20	3427	716	471	1118	855	370	485	80	401	481	1676
1.5H·2.5H	φ24	3494	803	558	1101	855	370	485	80	401	481	1676
2.5U	φ28	3590	899	654	1101	855	370	485	100	401	501	1696
2.5H·2.5U	φ32	3692	976	731	1126	855	370	485	120	505	625	1820

Figures in [ ] show dimensions with options.

50MEt III (CE)

OUTSIDE VIEW